


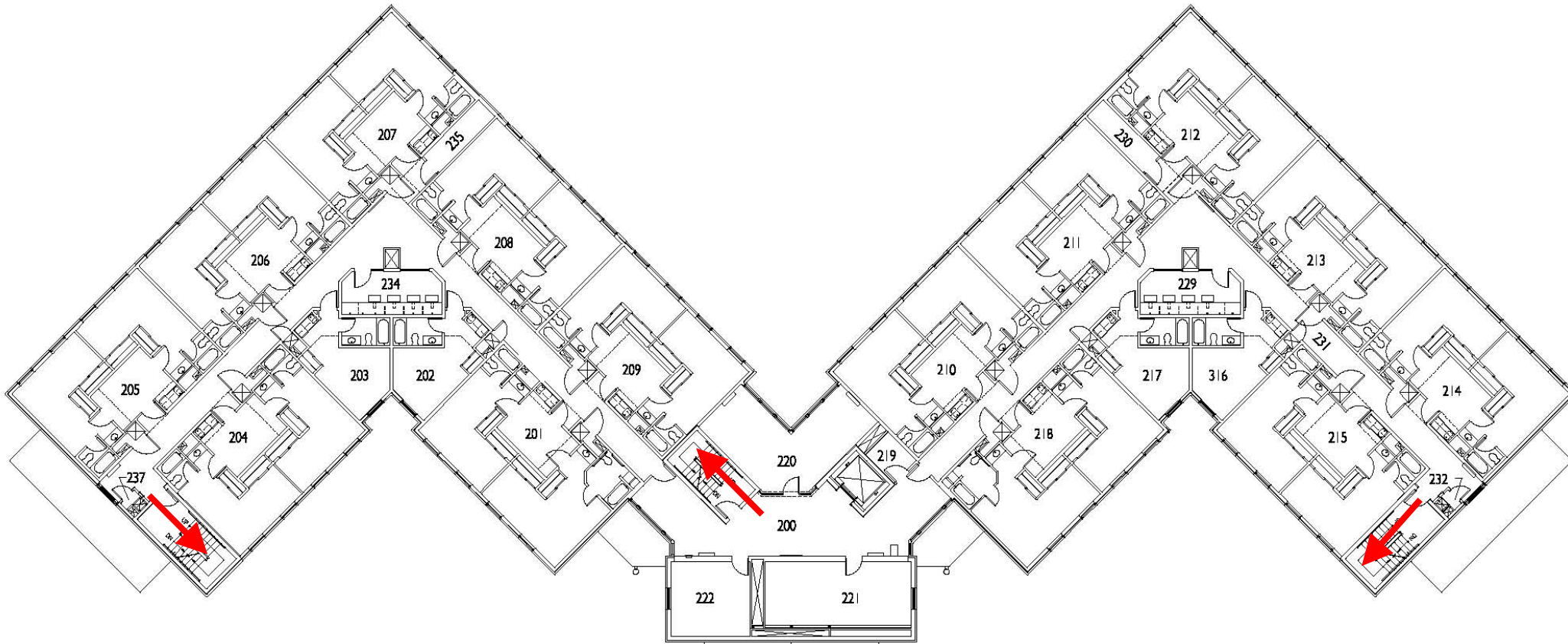


**O'Bannon &
Ruston Hall
Student Housing
Second Level**

-  Primary Exit
-  Evacuation Area
-  Severe Weather Gathering Area



IN THE EVENT OF SEVERE WEATHER, PROCEED TO THE DESIGNATED "SEVERE WEATHER GATHERING AREA" IN THE LOWER LEVEL OF THE BUILDING.