


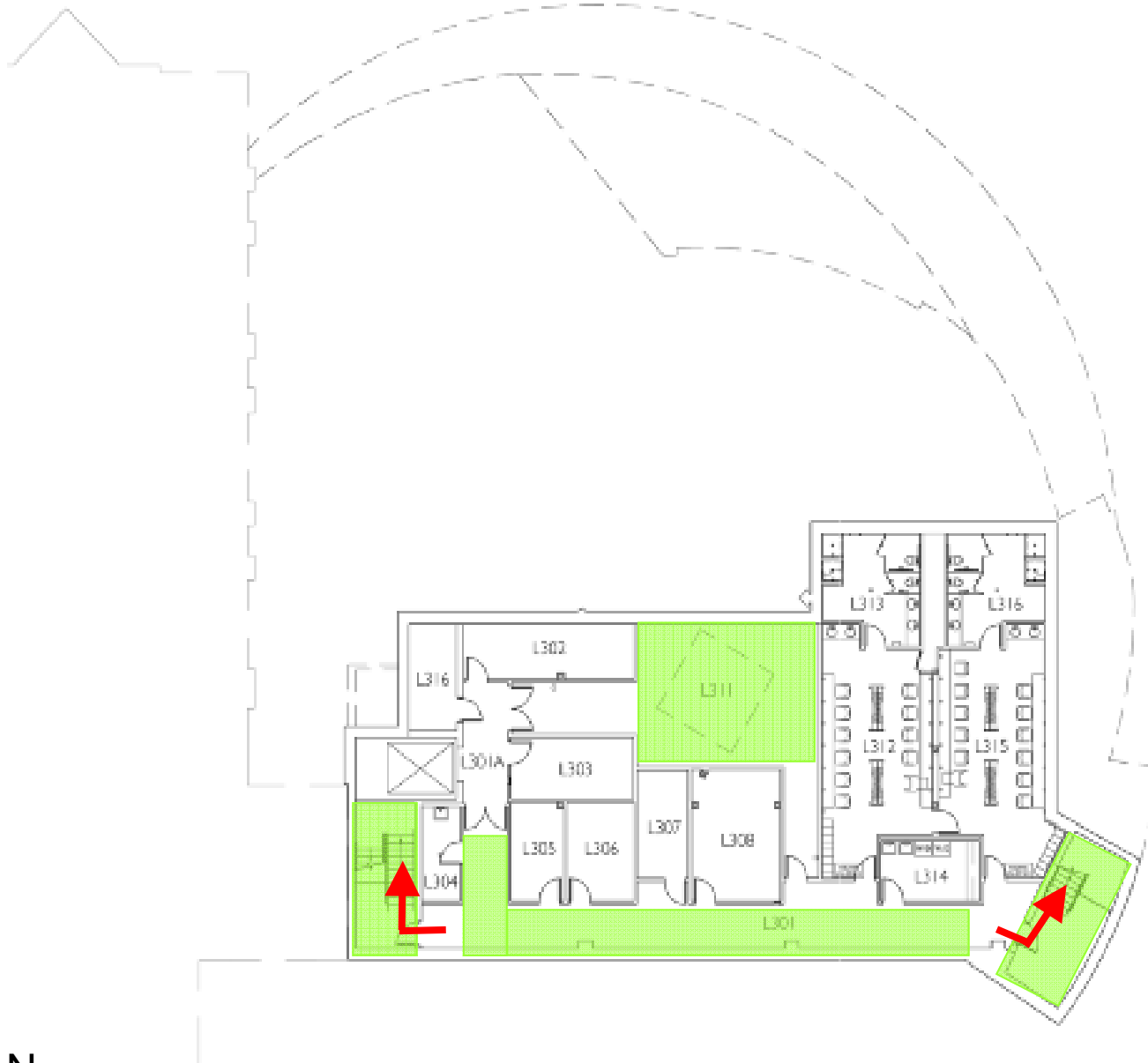




University of
Southern Indiana

Performance
Center
Basement

-  Primary Exit
-  Evacuation Area
-  Severe Weather Gathering Area



IN THE EVENT OF SEVERE WEATHER, PROCEED TO THE DESIGNATED "SEVERE WEATHER GATHERING AREA" IN THE BASEMENT OF THE PERFORMANCE CENTER.

