



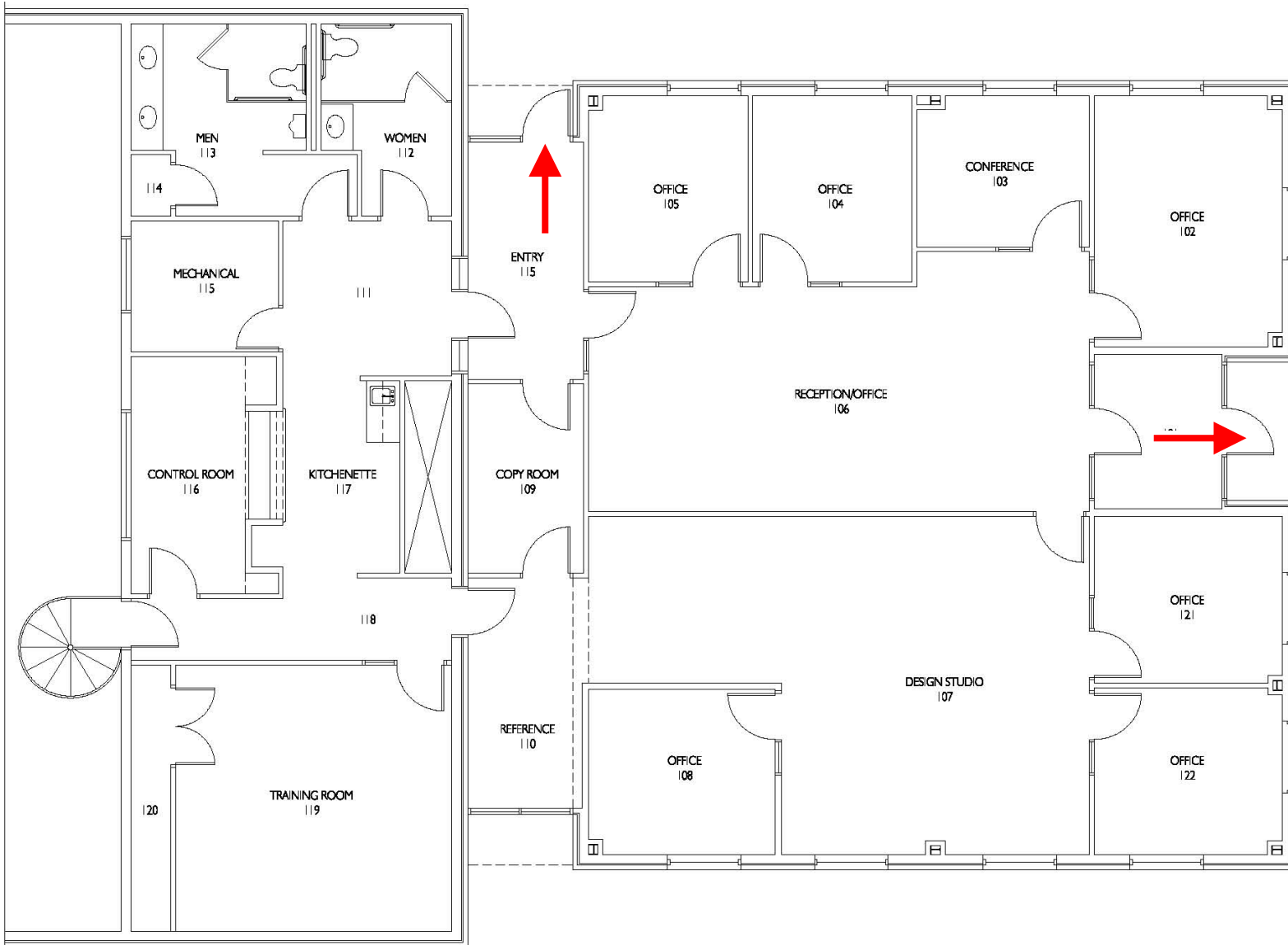
University of  
Southern Indiana

Physical Plant  
Services Center  
First Level

→ Primary Exit

● Evacuation Area

■ Severe Weather  
Gathering Area



**IN THE EVENT OF SEVERE WEATHER , PROCEED TO THE "SEVERE WEATHER GATHERING AREA"  
IN THE LOWER LEVEL OF THE PHYSICAL PLANT.**

